

Injection Moulding Machine

Clamping Unit

		KM 500 C		
Clamping force ¹⁾	kN	5000		
Mould opening force	kN	280		
Travel force movable platen				
opening	kN	137		
closing	kN	116		
Size of mould platens (h x v)	mm	1270 x 1200		
Clearance between tie bars (h x v)	mm	900 x 800		
Mould opening stroke	mm	1170		
Mould height min.	mm	480		
Max. daylight	mm	1650		
Hydraulic ejector – stroke	mm	250		
Ejector force forward/backward	kN	95/48		

Injection Unit

		SP 2700		
Working capacity ²⁾		2700		
Screw diameter	mm	70	80	90
L _s /D ratio		23	20	18
Injection pressure	bar	2389	1829	1445
Stroke volume	cm ³	1097	1433	1813
Shot weight, PS	g	998	1304	1650
Injection rate	cm ³ /s	393	513	649
Screw drive standard/ <i>option</i> ⁶⁾	1/min	218/284		
from SP 5000 upwards – stage 1/ <i>stage 2</i>	1/min			
Plasticising rate at ³⁾ max.				
Screw speed standard or stage 1, PS	g/s	83	108	137
Screw speed <i>option</i> or stage 2, PS	g/s	108	141	179
Nozzle pressure	kN	129		

Electric and Hydraulic Equipment

Nominal capacity of pump motor	kW	75		
Installed heating capacity	kW	36		
Adjustable barrel heating zones		7		
Dry cycle number ⁴⁾	1/h	950		
Oil filling	ltr.	1075		

Dimensions and Weights

Net weight including control cabinet	t	25.0		
Installation dimension (l x w x h)	m	7.36 x 2.33 x 2.51		
Max. mould weight	kg	7900		

Injection Unit C2

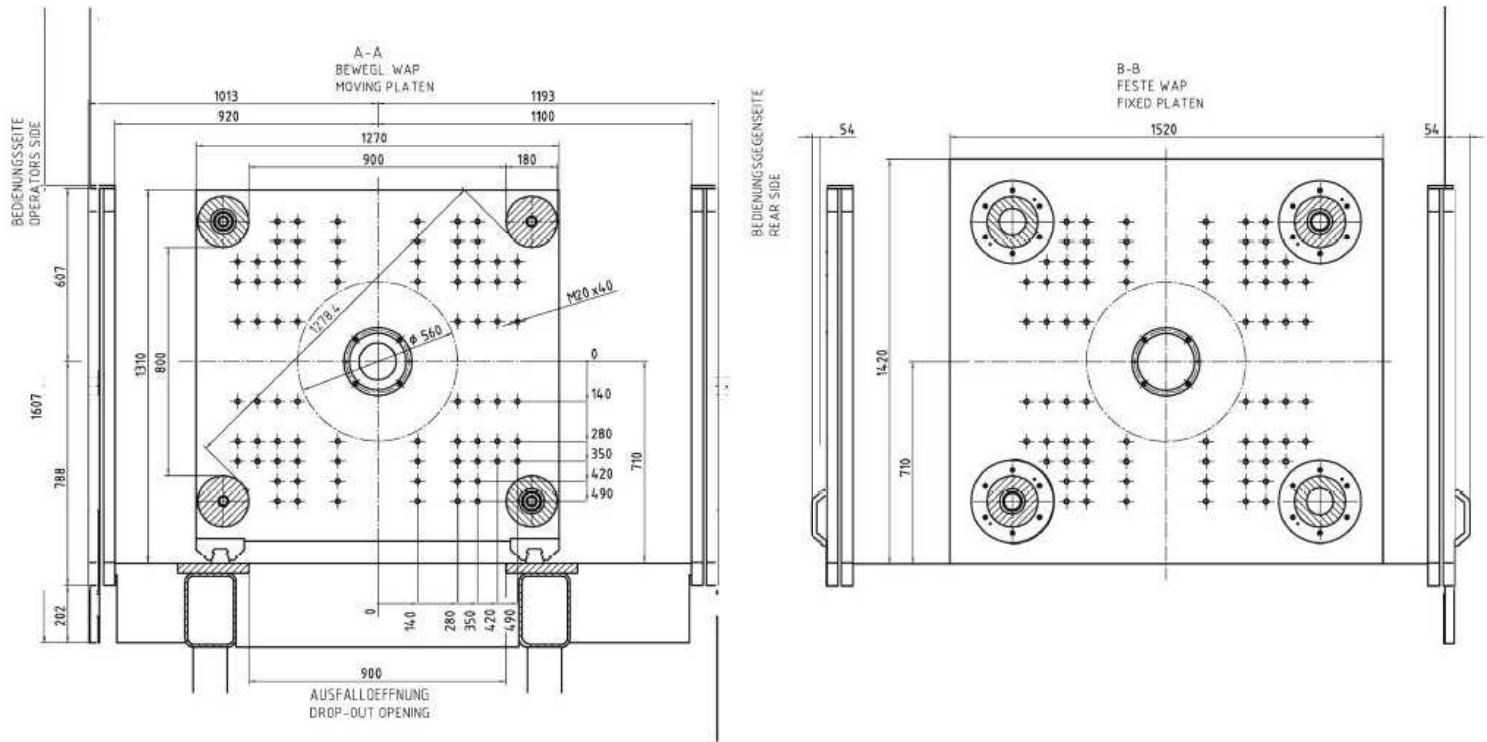
Injection rate	cm ³ /s	473	618	782
Screw speed standard/ <i>option</i>	1/min	218/284		
Plasticising rate ³⁾ at				
Screw speed standard, PS	g/s	83	108	137
Screw speed <i>option</i> , PS	g/s	108	141	179
Nominal capacity of pump motor	kW	90		

Injection Unit C2 with accumulator

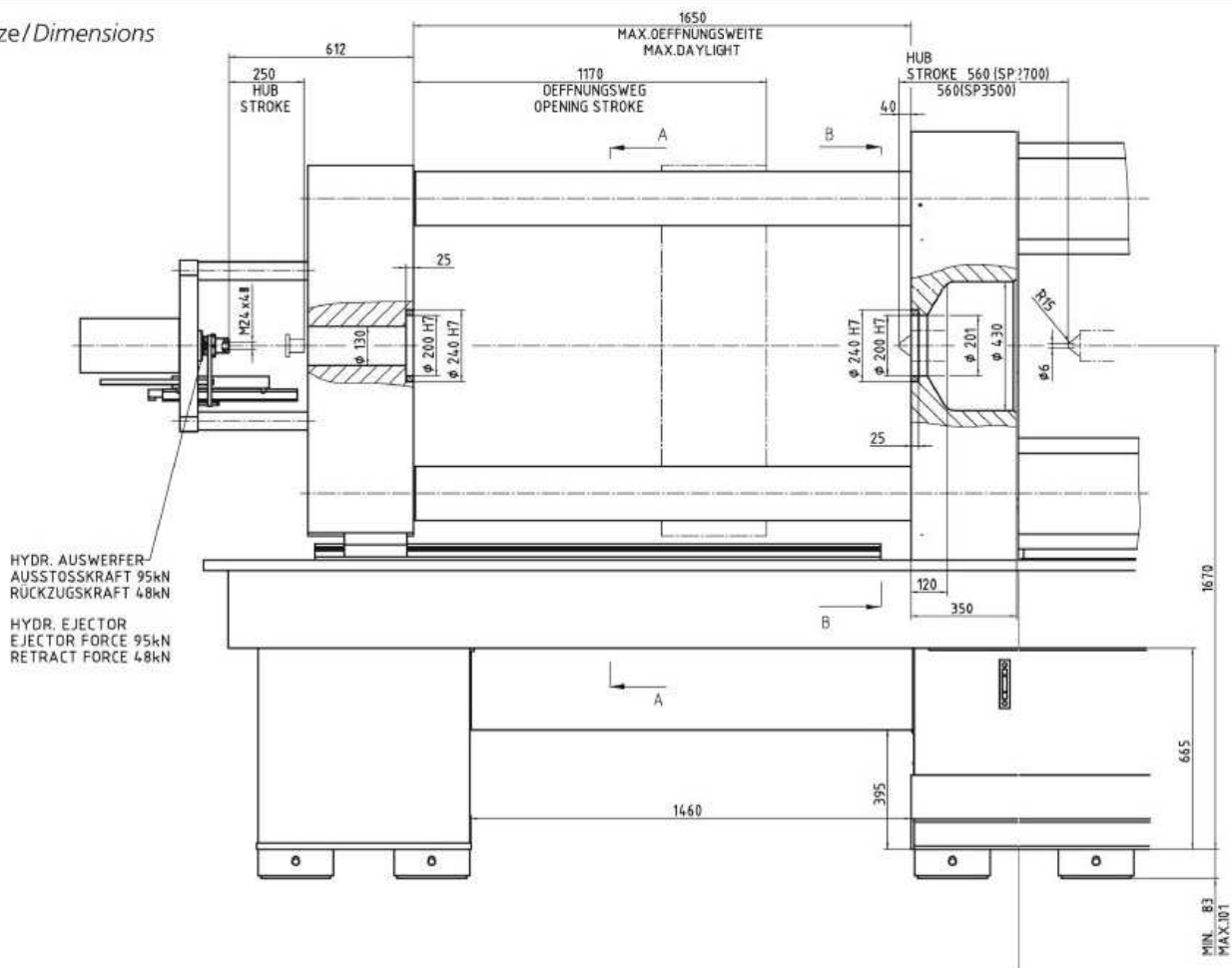
Injection rate, accumulator	cm ³ /s	1155	1508	1909
Screw drive standard/ <i>option</i>	1/min	218/284		
Plasticising rate ³⁾ at max.				
Screw speed standard, PS	g/s	83	108	137
Screw speed <i>option</i> , PS	g/s	108	141	179
Nominal capacity of pump motor	kW	90		

Additional Equipment

Maßskizze / Dimensions



Maßskizze / Dimensions



- 1) $1 \text{ kN} \hat{=} 0,1 \text{ Mp}$
- 2) Internationale Größenbezeichnung errechnet aus max. Hubvolumen (cm^3) x max. Spritzdruck (bar) dividiert durch 1000.
- 3) Ermittelt nach KM-Werksnorm.
- 4) Nach Euromap 6 (Zyklen pro Stunde).
- 5) Erhöhte Antriebsleistung auf Anfrage.
- 6) Zusätzl. Maschineneinrichtungen

- 1) $1 \text{ kN} \hat{=} 0,1 \text{ Mp}$
- 2) International classification calculated from max. stroke volume (cm^3) x max. injection pressure (bar) divided by 1000.
- 3) Determined according to KM standards.
- 4) According to Euromap 6 (cycles per hour).
- 5) Uprated capacity on request.
- 6) Additional equipment